

SW 1/4 OF THE SW 1/4  
SECTION 27, T.6N., R.2W., S.L.B. & M.

76-4

TAXING UNIT: 53, 377

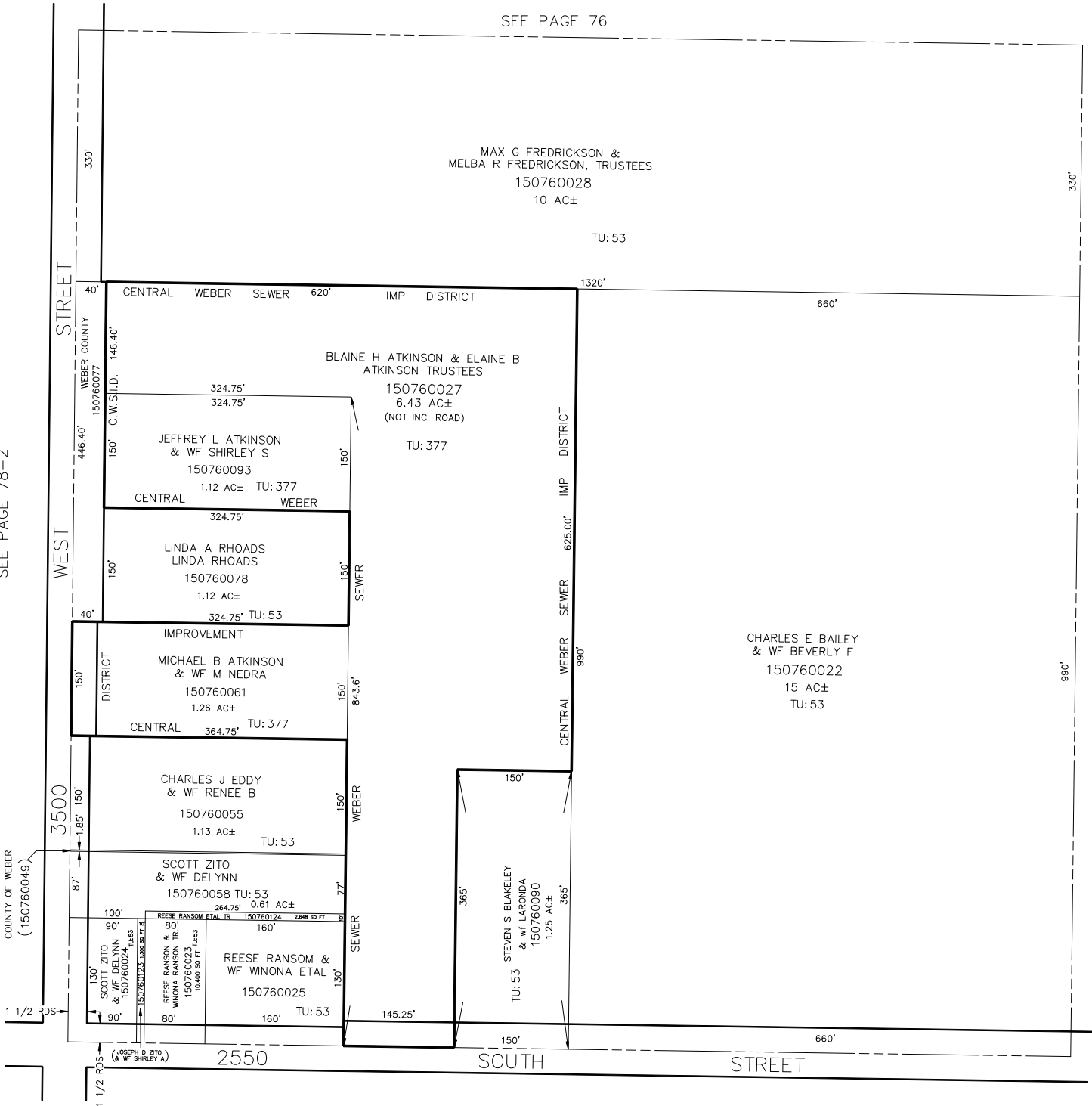
IN WEBER COUNTY

SCALE 1" = 100'

SEE PAGE 76

SEE PAGE 78-2

SEE PAGE 76



SEE PAGE 92